



 **YORK**

YORK® Variable Water Flow (YVWF)  
Amichi® Series  
Airside Indoor Units

Elevating your health and comfort  
with cutting-edge technology

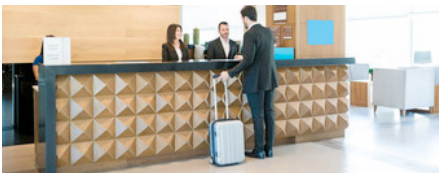
# YORK® - A Legacy of Innovation

Trusted in the world's most prestigious buildings for more than 145 years, YORK® make homes, offices and commercial spaces more comfortable and sustainable.

When you have small to medium comfort applications to be cooled and heated you can now count on **YORK® Amichi™ Inverter Scroll Air Cooled Chillers for Variable Water Flow (VWF) system.**

**YORK® Variable Water Flow** offers optimum and modular design, higher diversity, higher flexibility, higher reliability and consistent performance over its life cycle.

## Sustainable Cooling Solutions with YORK® Variable Water Flow



Hotels and Restaurants



Hospitals, Clinics & Diagnostics



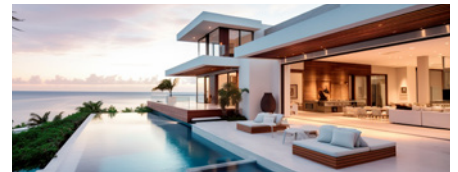
Schools & Universities



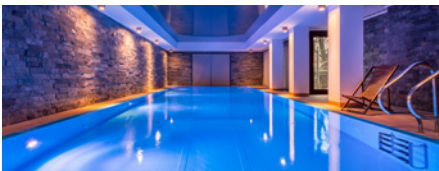
Retail and Showrooms



Movie and Theaters



Villas and Housing



Swimming Pool Heating



Office Space



Food & Beverage



Distillation & Breweries



Packaging Industry



Injection Molding



Investment Casting



Chemical Cooling & Pharmaceuticals



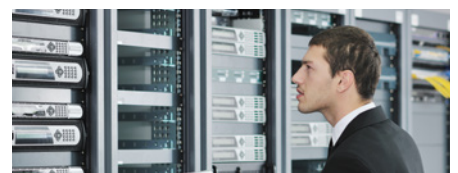
Hatcheries



Dairy & Pasteurization



Fabric and Apparels



Mini Datacenters, Server Rooms & Battery Rooms

# YORK® YVAG

## Air-cooled DC Inverter Scroll Chiller and Heat Pump

YVAG 012 to 040

A complete range from 11.2 kW up to 40 kW



### Features

- High Efficiency
- Built in Pump
- Optimized Low sound
- Cooling & Heating
- Plug & Play
- Factory coated Condenser
- Modular Units: can control up to 4 units up to 160 kW

### Technical features

Model		YVAG012	YVAG018	YVAG025	YVAG033	YVAG040	
<b>Performance</b>	Nominal Cooling Capacity	kW	11.2	18	25	32	40
	Nominal Heating Capacity	kW	12.6	19.5	27	34	42
	Sound Power Level	dB(A)	54	57	57	59	61
<b>Compressor</b>	Type	Rotary DC Inverter			EVI DC Inverter		
	Quantity	#	1	1	1	1	1
<b>Air side heat exchanger</b>	Fan motor type	Brushless DC Fan Motor					
	Fans quantity	#	2	2	2	2	2
	Airflow	m³/h	2500-6600		2500-10500		2500-12000
<b>Water side heat exchanger</b>	Type	Brazen Plate Heat Exchanger					
	Pump Type	Multiple Stage Centrifugal Pump					
	Nominal water flow	m³/h	1.93	3.1	4.3	5.5	6.88
	Unit external head	m	15	11	19	14	14
<b>Dimensions and weight</b>	Height	mm	1320	1320	1588	1588	1700
	Length	mm	1021	1021	1143	1143	1300
	Width	mm	420	420	520	520	760
	Operating weight	kg	126	141	210	215	350
<b>Electrical</b>	Power supply	V/ph/Hz	230V/1ph/50Hz		380/400V-3Ph-50Hz		

Nominal conditions:

Cooling capacities in kW given for 12/7°C water leaving temperature  $\Delta t$  5°C and 35°C ambient temperature.

Heating capacities in kW given for 40/45°C water leaving temperature and 7°C ambient temperature.

Sound data is tested in YORK lab which may vary according to different installation conditions.

# YORK® YMAE

## Air-cooled DC Inverter Scroll Chiller and Heat Pump

YMAE 045 to 140

A complete range from 45 kW to 140 kW



### Features

- High Efficiency
- Optional inbuilt pump
- Optimized Low sound
- Cooling & Heating
- Plug & Play
- Factory coated Condenser
- Modular Controls : Up to 32 units can be connected in one system providing wide capacity range (45- 2080 kW)

### Technical features

Model		YMAE045	YMAE065	YMAE140	
<b>Performance</b>	Nominal Cooling Capacity	kW	45	65	140
	Nominal Heating Capacity	kW	46	66	145
	Sound Power Level	dB(A)	66	68	69
<b>Compressor</b>	Type	EVI DC Inverter			
	Quantity	#	1	1	2
<b>Air side heat exchanger</b>	Fan motor type	Brushless DC Fan Motor			
	Fans quantity	#	2	2	2
	Airflow	m³/h	2500-15000	2500-22000	2500-44000
<b>Water side heat exchanger</b>	Type	Braze Plate Heat Exchanger			
	Pump Type	Centrifugal pump			
	Nominal water flow	m³/h	7,74	11,19	23,22
	Unit external head	m	22	15	-
<b>Dimensions and weight</b>	Height	mm	1700	1700	2421
	Length	mm	1300	1650	2240
	Width	mm	760	760	1200
	Operating weight	kg	357	440	970
<b>Electrical</b>	Power supply	V/ph/Hz	380/400V-3Ph-50Hz		

Nominal conditions:

Cooling capacities in kW given for 12/7°C water leaving temperature  $\Delta t$  5°C and 35°C ambient temperature.

Heating capacities in kW given for 40/45°C water leaving temperature and 7°C ambient temperature.

Sound data is tested in YORK lab which may vary according to different installation conditions.

# YORK® YMPA Air-cooled Inverter Scroll Chiller and Heat Pump

YMPA 0080 to 0260  
A complete range from 78 kW up to 255 kW



Heat Pump Product of the Year  
WINNER ACR AWARDS 2021



YORK System Setpoints	
System Setpoints	System Setpoints
System	Coil Temp. After Defrost 10 °C
Unit	Mode Control Select HMI
Fault	ON/OFF Control Select HMI
Diagnosis	Memory In Power Off <input checked="" type="checkbox"/>
Schedule	Clear Running Time <input checked="" type="checkbox"/>
HMI	
May, 24th 2020 15:58	

## Exceeding Efficiency Standards

The YORK® Amichi Series Air-Cooled DC Inverter Scroll Chillers and Heat Pumps have been designed to meet tomorrow's efficiency standards today. Delivering performance beyond typical chiller and heat pump efficiency levels, the YORK® Amichi Series meets or exceeds stringent regulatory requirements (see chart below) through an optimized combination of efficiency-enhancing technologies from YORK®.

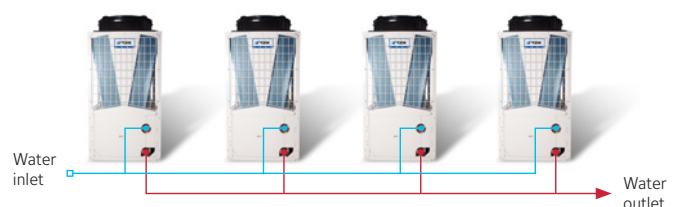
ECODESIGN REGULATIONS CATEGORY:	EFFICIENCY METRIC:	TOMORROW'S STANDARDS MET TODAY:
Comfort Heating	SCOP/ηsh	<b>Amichi Heat Pump:</b> Sept. 2017 Compliant (Tier 2)
Comfort Cooling	SEER/ηsc	<b>Amichi Chiller:</b> Jan. 2021 Compliant (Tier 2)
Process Cooling (Med. Temp.)	SEPR	<b>Amichi Chiller:</b> July 2018 Compliant (Tier 2)
Process Cooling (High Temp.)	SEPR	<b>Amichi Chiller:</b> Jan. 2021 Compliant (Tier 2)

## Performance Without Compromise

The YORK® Amichi Series is a no-compromise solution for a variety of climates and locations. It can maintain efficiency in a variety of conditions without kits or add-ons (down to -18°C ambient in cooling mode and -15°C ambient in heating mode). With the smallest footprint across the widest capacity range on the market, the YORK® Amichi Series is also the perfect solution for high performance in smaller spaces. Our systems offer two levels of sound performance. If requirements call for sound attenuation beyond our standard low-noise levels, an optional Ultra Quiet Kit can further reduce sound power by 6 dBA, providing one of the quietest units available.

## Modular system - Greater design flexibility

- 9 package models or modular combinations
- Controls can be parent/child controller if application requires
- Maximum of 32 units below 130 kW
- Maximum of 16 units above 130 kW



# YORK® YMPA Air-cooled Inverter Scroll Chiller and Heat Pump

YMPA 0080 to 0260

A complete range from 78 kW up to 255 kW

## Maximum reliability

Every new YORK® chiller is subjected to a Highly Accelerated Life Test (HALT) during the design product development stages, allowing us to simulate a variety of extreme conditions and ensuring long-term operational reliability and quality. But our pursuit of quality doesn't stop there.

- **Intelligent defrost** optimizes the sequencing of the defrost cycle and allows the remaining modules in the system to continue to provide heat, reducing interruptions.
- **Compliance and certifications** include EcoDesign 2021 regulatory compliance, Eurovent certification and CE/PED certification.



## High performance and flexibility

The YORK® Amichi Series has up to 4 completely independent circuits to offer greater flexibility and performance.



**YMPA 45 and 65**  
45kW and 65kW  
2 compressors  
1 circuit



**YMPA 80 to 130**  
80kW, 100kW and 130kW  
3-4 compressors  
2 circuits



**YMPA 160 and 200**  
160kW and 200kW  
5-6 compressors  
3 circuits



**YMPA 230 and 260**  
230kW and 260kW  
7-8 compressors  
4 circuits



Customized hermetic scroll compressors designed for A2L refrigerant



Optimized plate heat exchanger, suitable for R454B application



A ventilation system installed inside the unit to ensure no A2L gas accumulates



Leakage detective sensor equipped to detect any gas leakage



# YORK® YMPA

## Air-cooled Inverter Scroll Chiller and Heat Pump

YMPA 0080 to 0260

A complete range from 78 kW up to 255 kW

### Technical features

Model		YMPA0080	YMPA0100	YMPA0130	YMPA0160	YMPA0200	YMPA0230	YMPA0260	
Performance	Nominal Cooling Capacity kW	78	99	122	159	188	222	255	
	Nominal Heating Capacity kW	87	99	131	161	190	230	255	
	Sound Power Level STD/LN dB(A)	81/77	83/79	84/80	86/82	87/82	88/83	89/84	
Compressor	Type	DC Scroll Inverter + Scroll							
	Quantity #	3	3	4	5	6	7	8	
Air side heat exchanger	Fan motor type	EC Motor							
	Fans quantity #	2	2	2	3	3	4	4	
	Airflow m³/h	32400	36000	43200	61200	68400	82800	90000	
Water side heat exchanger	Type	Brazen Plate Heat Exchanger							
	Pump Type	Multiple-stage centrifugal pump							
	Nominal water flow m³/h	13.68	17.28	21.24	26.64	32.76	37.8	42.84	
	Unit external head kPa	15	15	15	15	15	15	15	
Dimensions and weight	Height mm	2440			2500				
	Length mm	2240							
	Width mm	1200				3050			
	Operating weight kg	893	920	999	1922	2003	2235	2316	
Electrical	Power supply V/ph/Hz	380/400V-3Ph-50Hz							

Nominal conditions:

Cooling capacities in kW given for 12/7°C water leaving temperature Δt 5°C and 35°C ambient temperature.

Heating capacities in kW given for 40/45°C water leaving temperature and 7°C ambient temperature.

Sound data is tested in YORK lab which may vary according to different installation conditions.

Dimension & weight data with standard unit without option. Weight might vary with options like Hydronic kit.

### Safety is our priority

The YORK® Amichi Series Air-Cooled DC Inverter Scroll Heat Pump is designed for safe operation. The new R454B refrigerant was chosen with safety and low toxicity in mind.

R454B has a 78 percent lower GWP value in comparison to R410A and is classified in safety class A2L (non-toxic and difficult to ignite).

This heat pump is equipped with refrigerant leakage sensors, additional switch cabinet ventilation, and software management for leak warning messages. With multiple functional and reliability tests, quality assurance is enhanced.

To maximise safety, the system design has been verified by a third-party certification body to increase customer peace of mind. The customized components together with our advanced technology, give absolute confidence.

		Refrigerants Safety Groups	
Flammability	Higher	A3	B3
	Lower	A2	B2
	Difficult to Ignite and Sustain	A2L	B2L
	No Flame Propagation	A1	B1
		Lower	Higher
		No identified toxicity at concentrations ≤ 400 ppm	Evidence of toxicity below 400 ppm
		Toxicity	

Source: ASHRAE Standard 34 Safety Classification



# YORK® Indoor Units / YORK® Airside Units

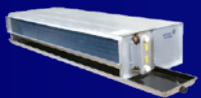
## CHILLED WATER PRODUCT SYSTEM



DUCTED TYPE



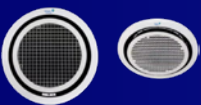
WALL MOUNTED



CEILING CONCEALED



ONE-WAY CASSETTE



ROUND CASSETTE



FOUR-WAY CASSETTE

# JCDFCU Ductable Units

JCDFCU 20 to 75

A complete range from 7.0 kW up to 26.4 kW



BMS  
Compatible



Blue-Tec  
Protection



Low Noise  
Operations



Galvanized  
Sheet



Medium Static  
Pressure



## Features

- Available In AC Motor
- Designed for Large Spaces
- Low Noise Levels up to 64 Db
- Blue tech / Silver tech Fin protection
- 10 Micron Filter
- Made of high quality Galvanised sheet and duly powder coated
- BMS compatible controller (option)
- Wired with wireless LCD Remote Control (option)

## Technical features

Model			JCDFCU20	JCDFCU30	JCDFCU40	JCDFCU50	JCDFCU75
Performance	Nominal Capacity (TR)	TR	2.0	3.0	4.0	5.0	7.5
	Voltage / Frequency / Phase	V/Hz/Ph	230/50/1	230/50/1	230/50/1	230/50/1	230/50/1
	Input Power Supply		Indoor Unit	Indoor Unit	Indoor Unit	Indoor Unit	Indoor Unit
	Cooling Capacity	Watt	7034	10551	14068	17585	26377
	Air Flow Volume	CFM	824	1227	1610	2011	3017
	Air Flow Volume	CMH	1360	2040	2720	3400	5100
Filter	Static	mm	5	5	10	10	10-15.
	Filter Configuration		Mesh Filter	Mesh Filter	Mesh Filter	Mesh Filter	Mesh Filter
Evaporator Coil	Face Area	m <sup>2</sup>	0.26	0.30	0.30	0.36	0.52
	Tube Outside Diameter	mm	9.5	7 mm	9.5 mm	9.5 mm	9.5 mm
	Tube Material / Grooved		Copper Tube	Copper Tube	Copper Tube	Copper Tube	Copper Tube
	No of Row		2	3	3	4	4
	Fin Type		Blue	Blue	Blue	Blue	Bare
Fan Motor Outdoor	FPI		14	16	14	14	16
	Make/AC		Marathon/PICL	Marathon/PICL	Marathon/PICL	Marathon/PICL	Marathon/PICL
	Currents		1.3	3.5	3.5	3.5	3.5
	Fan Motor Output Power in Watts ± 5%		124.3	400	400	400	550
	Speed		3 Speed	3 Speed	3 Speed	3 Speed	3 Speed
Blower Indoor	Fan Motor rpm ± 30rpm		1300	1130	1200	1300	1300
	Blower Size (DIDW)		160x202x12.7	190X202X12.7	190X202X12.7	190X202X12.7	232x254x12.7
Water Flow	Material Type		Aluminium	Aluminium	Aluminium	Aluminium	Aluminium
	No. of Blower use		2	2	2	2	2
Tube Size & Piping	LPM/GPM		20/5.29	30/7.94	40/10.58	50/13.23	75/19.84
	Inlet	mm	19.05	19.05	19.05	19.05	19.05
	Outlet	inch	19.05	19.05	19.05	19.05	19.05
Dimension & Weight	Drain pipe	mm	Ø25	Ø25	Ø25	Ø25	Ø25
	Width x Depth x Height	mm	1245x485x277	1205x725x330	1205x725x330	1205x725x330	1405x650x480
	Net/Gross weight	kg	37/43	38/45	57/67	66/76	69/74

Note : Rated Cooling Conditions: Air Inlet at 27 C-DB / 19.5 C-WB, Chilled Water Inlet / Outlet at 7°C / 12°C

1. Nominal Air Flow, Cooling Capacity and Power consumption value mentioned is at high speed.

2. The Power Input of 230V/50Hz AC motors are the same with that of 220V / 50 Hz AC motors.

# YGFC Ceiling Concealed Units

## YGFC 02 to 08

A complete range from 3.3 kW up to 7.0 kW



BMS  
Compatible



High Indoor  
Air Quality



Ultra Low  
Height



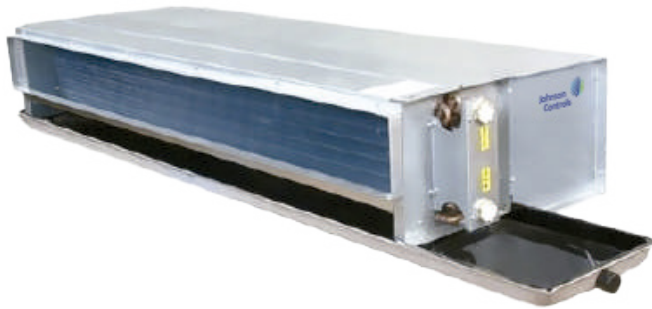
BLDC  
Motor



Wired LCD  
Remote  
Control



Customised  
Fac Coil Unit



### Features

- Available In AC Motor
- Designed for Large Spaces
- Low Noise Levels
- Blue tech Fin protection
- 10 Micron Filter
- Ultra low Height 230mm
- Long Drain tray
- BMS compatible controller (option)
- Wired with wireless LCD Remote Control (option)

### Technical features

Model		YGFC02	YGFC04	YGFC06	YGFC08	
<b>Performance</b>	Nominal Capacity (TR)	TR	0.8	1	1.5	2
	Voltage / Frequency / Phase	V/Hz/Ph	230/50/1	230/50/1	230/50/1	230/50/1
	Input Power Supply		Indoor Unit	Indoor Unit	Indoor Unit	Indoor unit
	Cooling Capacity (Watt)	Watt	3300	3517	5275	7034
	Air Flow Volume	CFM	400	400	600	800
	Air Flow Volume	CMH	676	676	1020	1352
<b>Filter</b>	Filter Configuration		Dust Filter	Dust Filter	Dust Filter	Dust Filter
<b>Evaporator Coil</b>	Type		Hydrophilic Blue	Hydrophilic Blue	Hydrophilic Blue	Hydrophilic Blue
	Face Area	sq Ft	1.50	1.50	1.86	2.72
	Length x Height x Depth	mm	665x210x64.86	665x210x64.86	825x210x64.86	1205x210x64.86
	Length x Height	Inch	26.2" x 8.25"	26.2" x 8.25"	32.5" x 8.25"	47.5" x 8.25"
	No of Row		3	3	3	3
	Tube Outside Diameter (Inch)		3/8"	3/8"	3/8"	3/8"
	Tube Material / Grooved		Copper Tube	Copper Tube	Copper Tube	Copper Tube
	Fin Type		Blue	Blue	Blue	Blue
FPI		15	15	15	15	
<b>Fan Motor Outdoor</b>	Motor Make/AC		Marathon/PICL	Marathon/PICL	Marathon/PICL	Marathon/PICL
	Fan Motor Output Power in Watts ± 5%		37	37	62	62x2
	Fan Motor rpm ± 30rpm		930	930	940	940
<b>Blower Indoor</b>	Blower Size		160x202x1/2"	160x202x1/2"	160x202x1/2"	160x202x1/2"
	Material Type		Aluminium	Aluminium	Aluminium	Aluminium
	No. of Blower use		2	2	2	3
<b>Water Flow</b>	GPM		2.11	2.65	3.97	5.29
<b>Tube Size &amp; Piping</b>	Inlet	inch	3/4"	3/4"	3/4"	3/4"
	Outlet	inch	3/4"	3/4"	3/4"	3/4"
<b>Dimension &amp; Weight</b>	IDU Net Dimension (W x D x H)	mm	1059x555x230	1059x555x230	1194x555x230	1649x555x230
	IDU Gross Dimension (W x D x H)	mm	1136x600x260	1136x600x260	1235x600x260	1690x600x260
	IDU Net Weight	kg	24	24	27	41
	IDU Gross Weight	kg	26	26	30	45

Note : Rated Cooling Conditions: Air Inlet at 27 C-DB / 19.5 C-WB, Chilled Water Inlet / Outlet at 7°C / 12°C

1. Nominal Air Flow, Cooling Capacity and Power consumption value mentioned is at high speed.

2. The Power Input of 230V/50Hz AC motors are the same with that of 220V / 50 Hz AC motors.

# JCRCT Round Cassette Units

JCRCT 500 to 1200

A complete range from 4.5 kW up to 10.8 kW



Ultra Long  
Airflow



BMS  
Compatible



BLDC  
Motor



Designed for  
Large Spaces



## Features

- AC motor
- Designed for Large Spaces
- Long Airflow
- Low Noise Levels
- BMS compatible PCB (option)

## Technical features

Model			JCRCT500	JCRCT600	JCRCT1000	JCRCT1200
Power Supply	V/Ph/Hz		230/1/50	230/1/50	230/1/50	230/1/50
Air Flow Volume (H/M/L)	m <sup>3</sup> /h		850/640/430	1020/790/520	1700/1290/860	2040/1500/1030
	CFM		502/378/254	603/467/307	1005/763/508	1207/887/609
Cooling	Capacity (H/M/L)	kW	4500/4200/3000	5600/4300/3600	9100/7900/6000	10800/8600/6800
	Water flow rate	m <sup>3</sup> /h	0.78	0.97	1.71	1.92
	Water pressure drop	kPa	16	18	17	19
	Power input	W	76	96	152	189
Heating	Capacity (H/M/L)	kW	7000/6300/5000	8400/6500/5200	13900/12000/9000	16700/12600/10200
	Water flow rate	m <sup>3</sup> /h	0.78	0.97	1.71	1.92
	Water pressure drop	kPa	16	18	17	19
	Power input	W	76	96	152	189
Sound pressure level	dBA		43	45	47	50
Fan motor	Type		AC	AC	AC	AC
	Quantity		1	1	1	1
Fan	Type		Centrifugal Fan	Centrifugal Fan	Centrifugal Fan	Centrifugal Fan
	Quantity		1	1	1	1
	Max. Working pressure	MPa	1.6	1.6	1.6	1.6
	Diameter	mm	9.75	9.75	9.75	9.75
Panel	Net dimensions (DxH)	mm	11500x1100x105	11500x1100x105	11500x1100x105	11500x1100x105
Body	Net dimensions (W×H×D)	mm	835x835x255	835x835x255	835x835x290	835x835x290
	Net weight	Kg	25	25	34	34
Pipe connections	Water inlet/outlet Pipe	Inch	19.05	19.05	19.05	19.05
	Drain pipe	mm	26	26	26	26

Note : Rated Cooling Conditions: Air Inlet at 27 C-DB / 19.5 C-WB, Chilled Water Inlet / Outlet at 7°C / 12°C

1. Nominal Air Flow, Cooling Capacity and Power consumption value mentioned is at high speed.

2. The Power Input of 230V/50Hz AC motors are the same with that of 220V / 50 Hz AC motors.

# JCHI High Wall Units

JCHI 08 to 20

A complete range from 2.8 kW up to 7.0 kW



Ultra Long  
Airflow



Wired LCD  
Remote  
Control



Wide  
Indoor Unit



Designed for  
Large Spaces



## Features

- Available In BLDC motor
- Wireless LCD Remote Control
- Designed for Large Spaces
- Blue-Tec Protection
- Long Airflow
- Low Noise Levels
- BMS compatible PCB (option)
- Wired Remote controller with wireless hand set (option)

## Technical features

Model			JCHI08	JCHI10	JCHI15	JCHI20
Power Supply	V/Ph/Hz		220-240/50/1	220-240/50/1	220-240/50/1	220-240/50/1
Nominal air flow	CFM		400	440	635	824
	CMH		680	748	1079.5	1400.8
Cooling Capacity	W		2813	3520	5280	7034
	TR		0.8 TR	1.0 TR	1.5 TR	2.0 TR
Motor	Type		BLDC	BLDC	BLDC	BLDC
	Power	W	18/30	18/30	30	57
	RPM/Speed	H/M/L	1250/1050/1000	1250/1050/1000	1250/1050/1000	1300/1100/1025
Coil	Tube Material		Copper Tube			
	Tube O.D		7mm Inner Grooved			
	Fin Material		Hydrophilic aluminum fin			
	Rows Deep		2	2	2	2
	Dimension		610x315x25.4	610x315x25.4	810x315x25.4	910x440x25.4
Sound pressure level	dB(A)		44	44	46	49
Water Pressure Drop	kPa		30	30	40	40
Inlet Outlet pipe	Inch		5/8	5/8	5/8	5/8
Drain Pipe	Inch		5/8	5/8	5/8	5/8
Water flow	GPM		2.11	2.65	3.97	5.29
Dimensions	Net Dim (WxDxH)	mm	800x222x292	800x222x292	1000x230x295	1100x248x330
	Gross Dim (WxDxH)	mm	890x287x352	890x287x352	1100x287x352	1190x330x400
Operating Weight (Net/Gross)	Kg		9.3/11	9.3/11	11.3/13.1	15.1 / 17.5

Note : Rated Cooling Conditions: Air Inlet at 27 C-DB / 19.5 C-WB, Chilled Water Inlet / Outlet at 7°C / 12°C

1. Nominal Air Flow, Cooling Capacity and Power consumption value mentioned is at high speed.

2. The Power Input of 230V/50Hz AC motors are the same with that of 220V / 50 Hz AC motors.

# JCCT 1 Way Cassette Unit

JCCT 010 to 015

A range from 3.6 kW up to 4.5 kW



BMS  
Compatible



Multi Fan  
Speed



Cooling Coil



BLDC  
Motor



Wireless  
Remote  
Control



Auto Swing  
Mode



## Features

- 2 Pipe system
- Available in AC Motor
- Compact Height 236 mm
- Fully Insulated
- Optional BLDC Motor

## Technical features

Model			JCCT010	JCCT015
<b>Performance</b>	Nominal Capacity	TR	1	1.5
	Voltage / Frequency / Phase	V/Hz/Ph	220-240/50/1	220-240/50/1
	Cooling Capacity	Watt	3600	4500
	Air Flow Volume	CFM	403	503
	Air Flow Volume	CMH	680	850
<b>Evaporator Coil</b>	Type		Hydrophilic Aluminium	Hydrophilic Aluminium
	No of Row		3	3
	Tube Outside Diameter	mm	9.52	9.52
	Tube Material		Copper Tube	Copper Tube
<b>Fan Motor Indoor</b>	Type of Motor		AC	AC
	Output Power	Watt	29	38
<b>Blower Indoor</b>	Material Type		DIDW Plastic Blower	DIDW Plastic Blower
<b>Sound Pressure Level</b>		dBA	46	47
<b>Dimensions and Weight</b>	Net Dimension Body (W x D x H)	mm	958x413x236	958x413x236
	Net Dimension Panel (W x D x H)	mm	1044x468x31	1055x520x180
	Net Weight/Gross Weight	kg	20.5/24.5	20.5/24.5
	Operating Pressure	Mpa	1.6	1.6
<b>Water Flow</b>	LPM/GPM		10/2.65	15/3.97
<b>Tube Size &amp; Piping</b>	INLET Tube Size Outer Diameter	mm (inch)	19.05 (3/4")	19.05 (3/4")
	OUTLET Tube Size Outer Diameter	mm (inch)	19.05 (3/4")	19.05 (3/4")

Note : Rated Cooling Conditions: Air Inlet at 27 C-DB / 19.5 C-WB, Chilled Water Inlet / Outlet at 7°C / 12°C

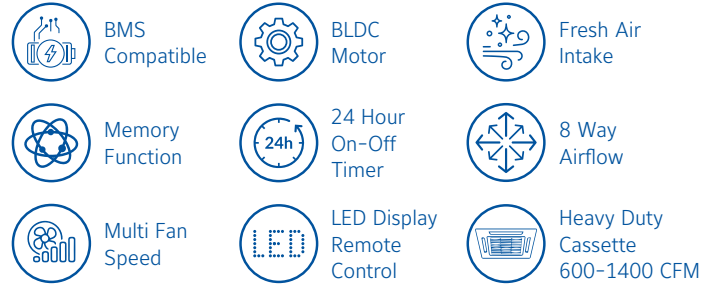
1. Nominal Air Flow, Cooling Capacity and Power consumption value mentioned is at high speed.

2. Sound pressure level is at 1m distance from unit in semi anechoic room at atmospheric conditions.

# JCCT Heavy Duty 4 Way Cassette Unit

JCCT 15 to 40

A complete range from 5.4 kW up to 12.6 kW



## Features

- 2 Pipe system
- AC Motor
- Eight way airflow
- BMS compatible PCB
- Fresh Air Intake
- 24 hr On/Off timer
- Memory Function
- Optional BLDC Motor

## Technical features

Model			JCCT15	JCCT20	JCCT25	JCCT30	JCCT40
<b>Performance</b>	Nominal Capacity	TR	1.5	2	2.5	3	4
	Voltage / Frequency / Phase	V/Hz/Ph	220-240/50/1	220-240/50/1	220-240/50/1	220-240/50/1	220-240/50/1
	Cooling Capacity H	Watt	5406	7210	9018	10810	12611
	Air Flow Volume H/M/L	CFM	600/450/300	800/600/400	1000/750/500	1200/900/600	1400/1050/700
	Air Flow Volume H/M/L	CMH	1020/765/510	1360/1020/680	1700/1275/850	2040/1530/1020	2380/1785/1190
<b>Evaporator Coil</b>	Type		Hydrophilic Aluminium	Hydrophilic Aluminium	Hydrophilic Aluminium	Hydrophilic Aluminium	Hydrophilic Aluminium
	Tube Outside Diameter	mm	7	7	7	7	7
	Tube Material / Grooved	mm	Copper / IGT	Copper / IGT	Copper / IGT	Copper / IGT	Copper / IGT
	No of Row		2	2	2	2	2
	Coil Length x Height x Width	mm	2044x205x25.4	2044x205x25.4	2044x246x25.4	2044x246x25.4	2044x246x25.4
	Max. Working Pressure		1.6 Mpa	1.6 Mpa	1.6 Mpa	1.6 Mpa	1.6 Mpa
	Circuit		9	9	12	12	12
<b>Fan Motor</b>	Type		AC	AC	AC	AC	AC
	Model		Low noise 3 speed fan motor YDK35-6Q	Low noise 3 speed fan motor YDK35-6Q	Low noise 3 speed fan motor XD80A	Low noise 3 speed fan motor XD80A	Low noise 3 speed fan motor XD80A
	Make		Changzhou	Changzhou	Welling	Welling	Welling
	Capacitor	uF	3.0	4.0	6.0	6.0	6.0
	Fan Motor input Power in Watts ± 5%		96	134	165	189	225
<b>Sound Pressure Level</b>	dBA	45	46	48	50	52	
<b>Dimensions and Weight</b>	Net Dimension Body (W x D x H)	mm	835×835×250	835×835×250	835×835×290	835×835×290	835×835×290
	Net Dimension Panel (W x D x H)	mm	950×950×55	950×950×55	950×950×55	950×950×55	950×950×55
	Net Weight / Gross Weight	kg	24.5/28	25.5/29	26.5/31	28/32.5	28/32.5
<b>Water Flow</b>	GPM	3.97	5.29	6.61	7.94	9.26	
<b>Water Pressure Drop</b>	kPa	31.0	34.0	36.0	39.0	42.0	
<b>Tube Size &amp; Piping</b>	INLET Tube Size Outer Diameter	inch	3/4	3/4	3/4	3/4	3/4
	OUTLET Tube Size Outer Diameter	inch	3/4	3/4	3/4	3/4	3/4
<b>Power cord</b>	mm <sup>2</sup>	4 CORE, 2.5	4 CORE, 2.5	4 CORE, 2.5	4 CORE, 2.5	4 CORE, 2.5	

Note : Rated Cooling Conditions: Air Inlet at 27 C-DB / 19.5 C-WB, Chilled Water Inlet / Outlet at 7°C / 12°C

1. Nominal Air Flow, Cooling Capacity and Power consumption value mentioned is at high speed.

2. Sound pressure level is at 1m distance from unit in semi anechoic room at atmospheric conditions.

# JCCT Compact 4 Way Cassette Unit

JCCT 08 to 13

A complete range from 3.3 kW up to 4.5 kW



BMS  
Compatible



BLDC  
Motor



Fresh Air  
Intake



Memory  
Function



24 Hour  
On-Off  
Timer



8 Way  
Airflow



Multi Fan  
Speed



LED Display  
Remote  
Control



Compact  
Cassette  
300-500 CFM

## Features

- 2 Pipe system
- AC Motor
- Eight way airflow
- BMS compatible PCB
- Fresh Air Intake
- 24 hr On/Off timer
- Memory Function
- Optional BLDC Motor

## Technical features

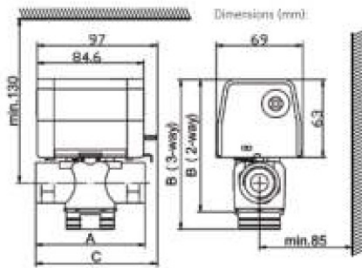
Model			JCCT08	JCCT10	JCCT13
<b>Performance</b>	Nominal Capacity	TR	0.8 Tr	1 Tr	1.3 Tr
	Voltage / Frequency / Phase	V/Hz/Ph	220-240/50/1	220-240/50/1	220-240/50/1
	Cooling Capacity (H)	Watt	3300	3900	4500
	Air Flow Volume	CFM	300	400	500
	Air Flow Volume	CMH	510	680	850
<b>Evaporator Coil</b>	Type		Hydrophilic Aluminium	Hydrophilic Aluminium	Hydrophilic Aluminium
	Tube Outside Diameter	mm	7	7	7
	Tube Material		Copper	Copper	Copper
	No of Row		2	2	2
<b>Fan Motor Indoor</b>	Type		AC	AC	AC
	Capacitor	uF	1.5	2.0	2.5
	Output Power	Watt	55	62	76
<b>Sound Pressure Level</b>		dBA	39	42	45
<b>Blower Indoor</b>			Centrifugal wind wheel	Centrifugal wind wheel	Centrifugal wind wheel
<b>Dimensions and Weight</b>	Net Dimension Body (W x D x H)	mm	570×570×260	570×570×260	570×570×260
	Net Dimension Panel (W x D x H)	mm	650×650×55	650×650×55	650×650×55
	Net Weight/Gross Weight	kg	18/20.3	18/20.3	18/20.3
	Operating Pressure	Mpa	1.6	1.6	1.6
<b>Water Flow</b>		LPM/GPM	8/2.12	10/2.65	12/3.17
<b>Tube Size &amp; Piping</b>	INLET Tube Size Outer Diameter	mm (inch)	19.05 (3/4")	19.05 (3/4")	19.05 (3/4")
	OUTLET Tube Size Outer Diameter	mm (inch)	19.05 (3/4")	19.05 (3/4")	19.05 (3/4")

Note : Rated Cooling Conditions: Air Inlet at 27 C-DB / 19.5 C-WB, Chilled Water Inlet / Outlet at 7°C / 12°C

1. Nominal Air Flow, Cooling Capacity and Power consumption value mentioned is at high speed.

2. Sound pressure level is at 1m distance from unit in semi anechoic room at atmospheric conditions.

# Johnson Controls 2 way / 3 way ON-OFF Valves



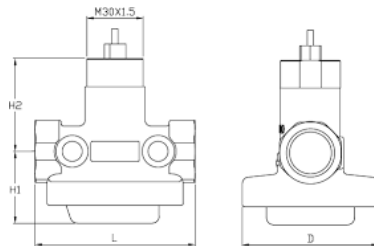
## Features

- Precision Control
- Maintains Room temperature
- Saves energy by precision control
- Spring return function

## Technical features

Model	DN Size	Type	Kv (Cv)	Close-off Pressure	Weight (g)	Dimensions (mm)		
						A	B	C
VLC2200FC-C	DN15	2-way	1.7 (2.0)	0.45 MPa (65PSI)	700	70	106	91
VLC2200GC-C	DN20	2-way	2.2 (2.5)	0.35 MPa (50PSI)	850	87	106	99
VLC2200HC-C	DN25	2-way	3.0 (3.5)	0.20 MPa (30PSI)	1000	95.5	112	103
VLC2300FC-C	DN15	3-way	1.7 (2.0)	0.45 MPa (65PSI)	750	70	115	91
VLC2300GC-C	DN20	3-way	2.6 (3.0)	0.35 MPa (50PSI)	900	87	120	99
VLC2300HC-C	DN25	3-way	3.4 (4.0)	0.20 MPa (30PSI)	1050	95.5	128	103

# Johnson Controls PICV Valves



## Features

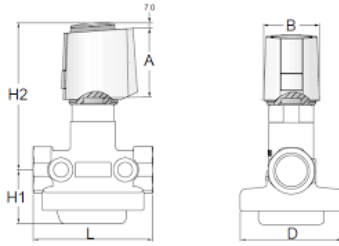
- Specific devices are not necessary
- Wide range of operating differential pressure
- Compact design that allows installation in small spaces such as fan-coils or narrow supply spaces
- Simple flow rate adjustment
- Dirty resistance allows long life characteristic
- Pressure ports selectable

## Technical features

Model	DN Size	Flow rate max (m³/h)	Stroke (mm)	Start-up max. (kPa)	P max. (kPa)	Pressure Ports
VPMF7015-C	DN15	0.9	4	35	500	No
VPMF7020-C	DN20	1.3	4	35	500	No
VPMF7025-C	DN25	2.0	4	35	500	No
VPMF7015P-C	DN15	0.9	4	35	500	Yes
VPMF7020P-C	DN20	1.3	4	35	500	Yes
VPMF7025P-C	DN25	2.0	4	35	500	Yes

DN	L (mm)	D (mm)	H1 (mm)	H2 (mm)	Weight (kg)
15	74	62	34	46.5	0.6
20	80	68	36	46.5	0.8
25	85	69	42.5	46.5	0.9

# Johnson Controls ON-OFF Actuators



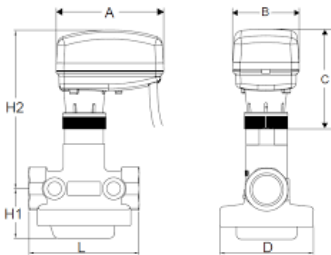
## Features

- Available for wide range of power requirements
- Easy installation
- Compact design
- IP 54 rated
- Feedback control

## Technical features

DN	L (mm)	D (mm)	H1 (mm)	H2 (mm)	A (mm)	B (mm)
15	74	62	34	104	53	44.3
20	80	68	36	104	53	44.3
25	85	69	42.5	104	53	44.3

# Johnson Controls Proportional Actuators – PICV



## Features

- 24 VAC/VDC and 230 VAC power supply
- Floating and proportional control
- Threaded nut M28x1.5 and M30x1.5
- Auto stroke detection
- Configurable stroke
- Configurable to direct and reverse action
- Configurable analog inputs
- Max mechanical stroke 6.3 mm
- Feedback control

## Technical features

DN	L (mm)	D (mm)	H1 (mm)	H2 (mm)	A (mm)	B (mm)	C (mm)
15	74	62	34	115	80	49	73.6
20	80	68	36	115	80	49	73.6
25	85	69	42.5	115	80	49	73.6

# Johnson Controls Thermostat



## Features

- Large backlit LCD
- Intuitive and clear interface
- Retain parameter setting after power loss
- Easy operation

## Technical features

DN	L (mm)	D (mm)	H1 (mm)	H2 (mm)	A (mm)	B (mm)
15	74	62	34	104	53	44.3
20	80	68	36	104	53	44.3
25	85	69	42.5	104	53	44.3

# Benefits of YORK® Variable Water Flow



Key Technology and Performance	YORK® @ VWF	VRF
Inverter Compressor	Yes	Yes
BLDC inverter / EC Fan Motor	Yes	Yes
Various indoor units	Yes	Yes
Cooling Operation with Ducted Indoor Units	Yes	Yes
Heating Operation with Ducted Indoor Units	Yes	Yes
Under-floor Heating	Yes	(HR or Split Type)
Connected Capacity Ratio Limitation	No	50%~130%
Limitation on Number of connected IDUs	No	Yes
Capacity deration due to long piping length	No	Yes (10%~20%)
The installation method for integrating the system	Glue or Thread	Brazing
Risk of water / refrigerant leakage in the room	Low (0.6MPa)	High (2.8~3.0MPa)
Option of scalability on IDU capacity	Yes	No
Caution for refrigerant leaks	No	Yes (concentration)
BMS Compatibility	Standard	Optional
Cooling Medium	Water	HFC Refrigerant



---

## About Johnson Controls

At Johnson Controls, we transform the environments where people live, work, learn and play. From optimizing building performance to improving safety and enhancing comfort, we drive the outcomes that matter most. We deliver our promise in industries such as healthcare, education, data centers and manufacturing. With a global team of 105,000 experts in more than 150 countries and over 130 years of innovation, we are the power behind our customers' mission.

Our leading portfolio of building technology and solutions includes some of the most trusted names in the industry, such as Tyco®, YORK®, Metasys®, Ruskin®, Titus®, Frick®, Penn®, Sabroe®, Simplex®, Ansul® and Grinnell®.

For additional information, please visit [www.johnsoncontrols.com/en](http://www.johnsoncontrols.com/en) or follow us [@johnsoncontrols](https://twitter.com/johnsoncontrols) on Twitter.

## Johnson Controls

B2, 3rd Floor, Cerebrum IT Park,  
Kumar city, Kalyani Nagar,  
Pune, Maharashtra 411014. India

E-mail: [BTS-India-Channelsales@jci.com](mailto:BTS-India-Channelsales@jci.com)

© 2025 Johnson Controls · All rights reserved.